

# MONTHLY MEMBERSHIP PROGRESS REPORT

LOCATION REPUBLIC OF NORTH MACEDONIA

District 132

Results as of: 11/30/2022

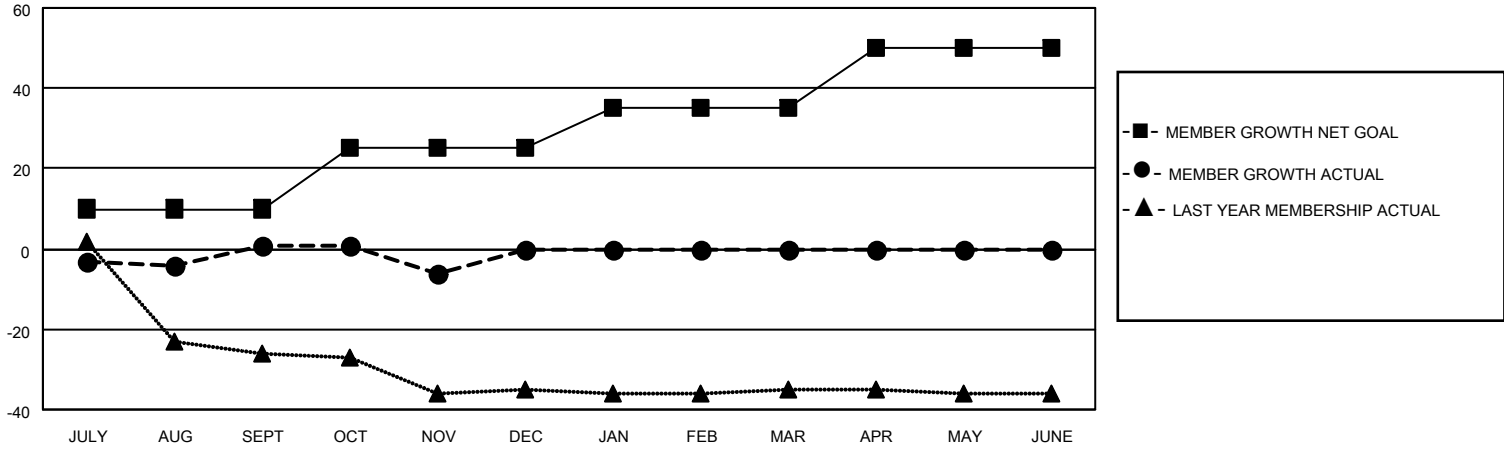
Clubs			
RESULTS FOR 2022-2023			
QUARTER	NEW CLUB GOAL	NEW CLUBS	DROPPED CLUBS
JULY/AUG/SEPT	0	0	0
OCT/NOV/DEC	0	0	0
JAN/FEB/MAR	1	0	0
APR/MAY/JUNE	0	0	0

Members			
RESULTS FOR 2022-2023			
QUARTER	MEMBER GROWTH NET GOAL	MEMBER GROWTH ACTUAL	DROPPED MEMBERS ACTUAL (including transfers)
JULY/AUG/SEPT	10	10	9
OCT/NOV/DEC	15	2	9
JAN/FEB/MAR	10	0	0
APR/MAY/JUNE	15	0	0

**GOALS AND ACTUAL NEW CLUBS CUMULATIVE**



**GOALS AND ACTUAL MEMBERS CUMULATIVE**



**DROPPED CLUBS: 0**

**5 CLUBS OF 30 ADDED 1 OR MORE NEW MEMBERS**

**GENDER DISTRIBUTION**

MALE	256 (55.77%)
FEMALE	203 (44.23%)
NON BINARY	0 (0.00%)
PREFER NOT TO ANSWER	0 (0.00%)

**DROPPED MEMBERS**

[CLICK HERE FOR CUMULATIVE MEMBERSHIP DATA](#)

DECEASED	0
CLUB CANCELLED	0
OTHER	18
<b>TOTAL</b>	<b>18</b>

TOTAL FAMILY UNIT MEMBERS 53

FAMILY MEMBERS PAYING HALF DUES 27